

FMLA ELIGIBILITY

To be eligible for FMLA benefits, an employee must...

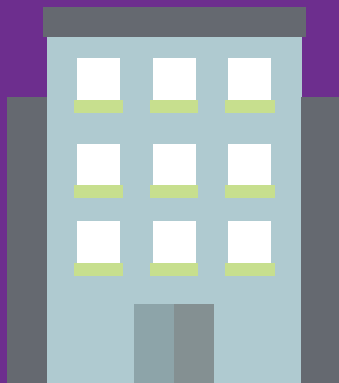


Have worked for at least

1,250 hours

over the previous 12 months before leave is to begin

Work for a
**covered
employer**



Have worked for
the employer
for at least

**12
months**

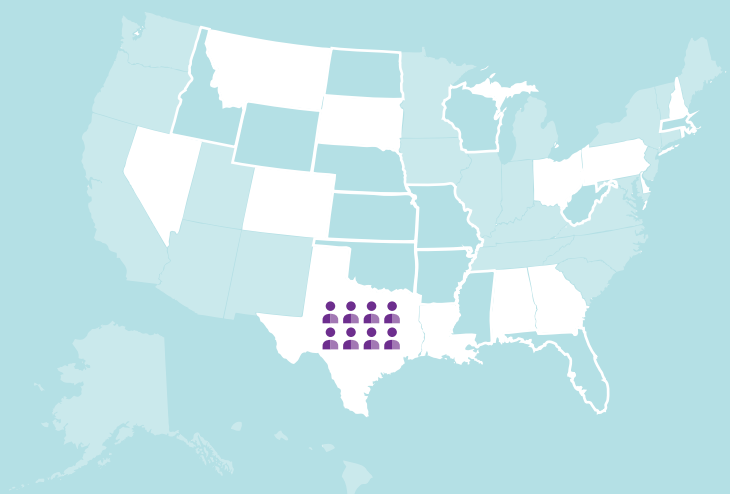
(needs not be consecutive)



Work at a location in the

United States

where **at least 50 employees**
are employed **within 75 miles**



J. J. Keller®

LEAVE MANAGER